



**Using Viva Grass Planner
for
Protected area management**

Justas Gulbinas, BEF Lithuania

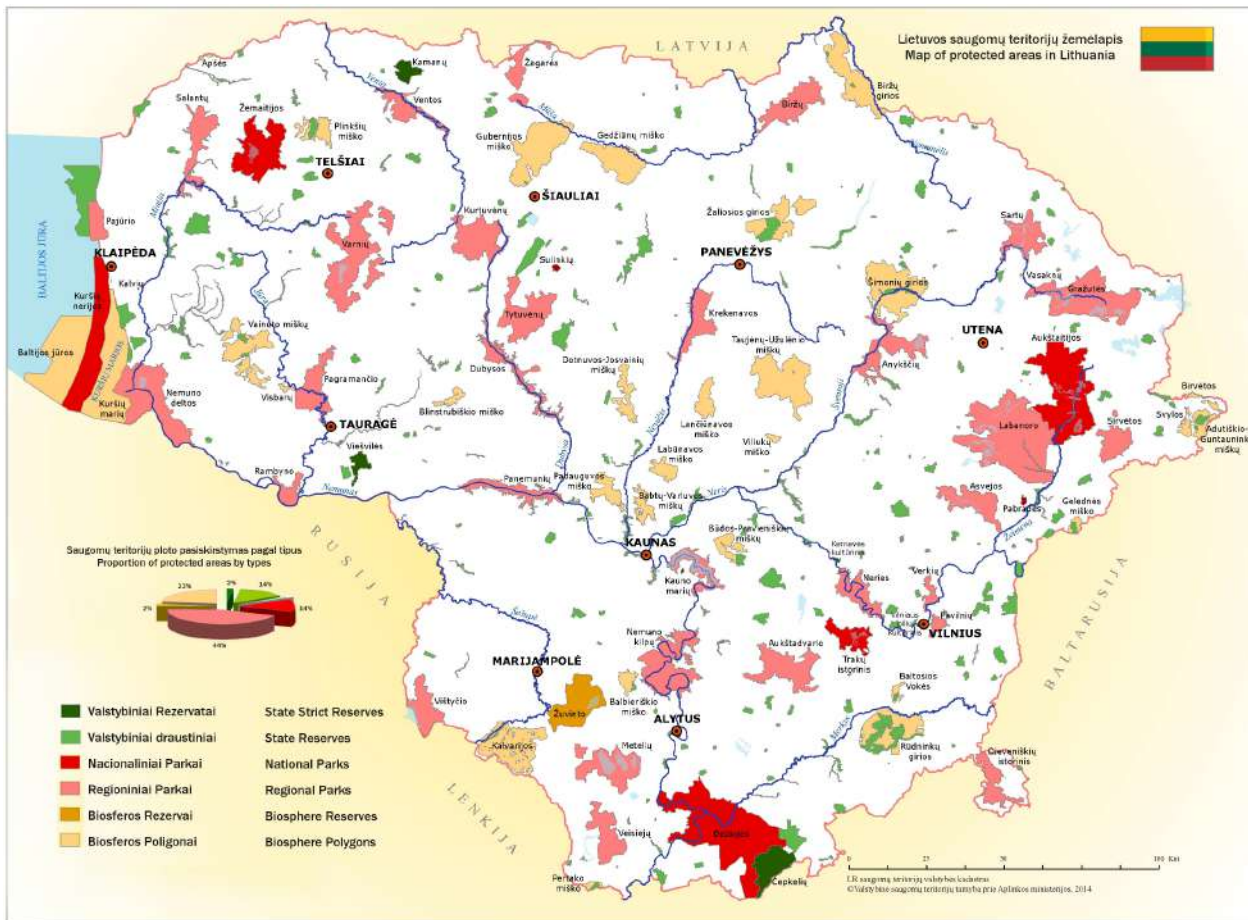
28 02 2019



LIFE Viva Grass LIFE13 ENV/LT/000189

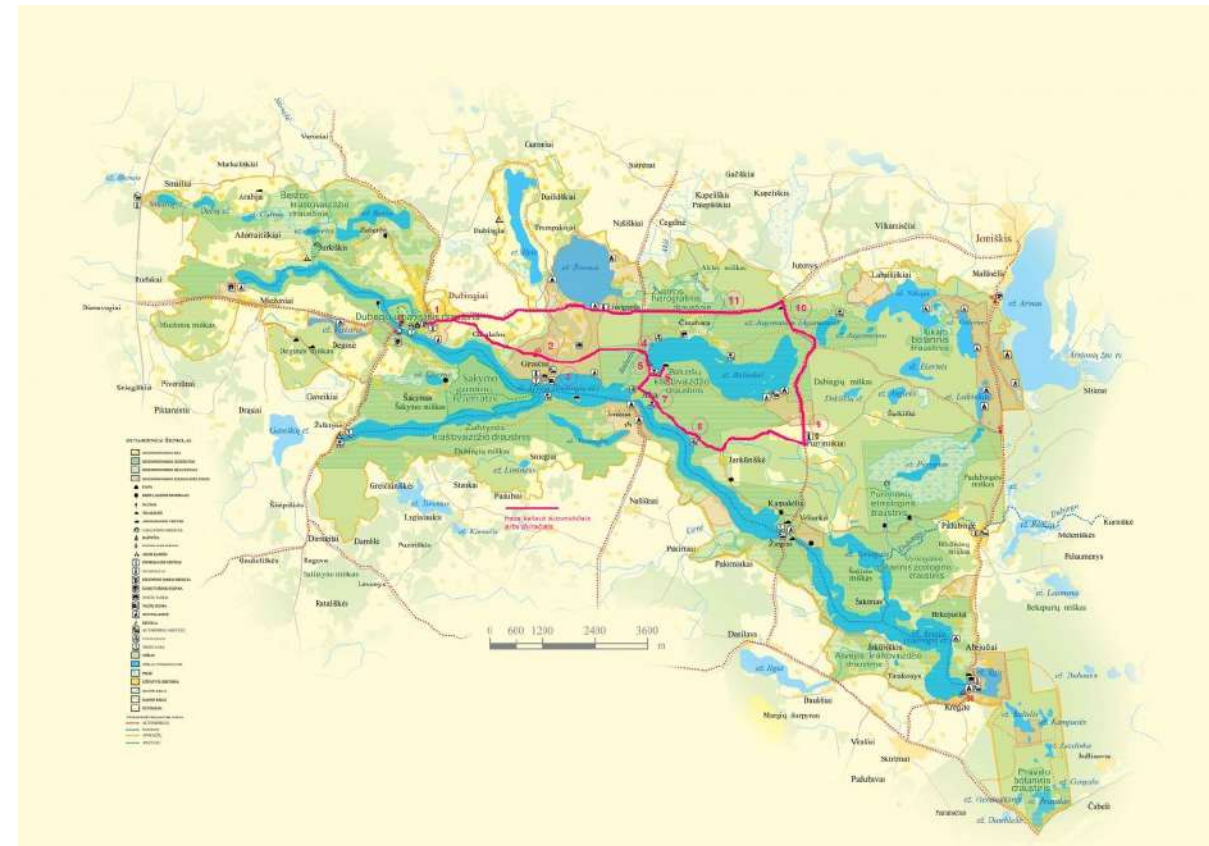
2019

www.vivagrass.eu



5 national parks

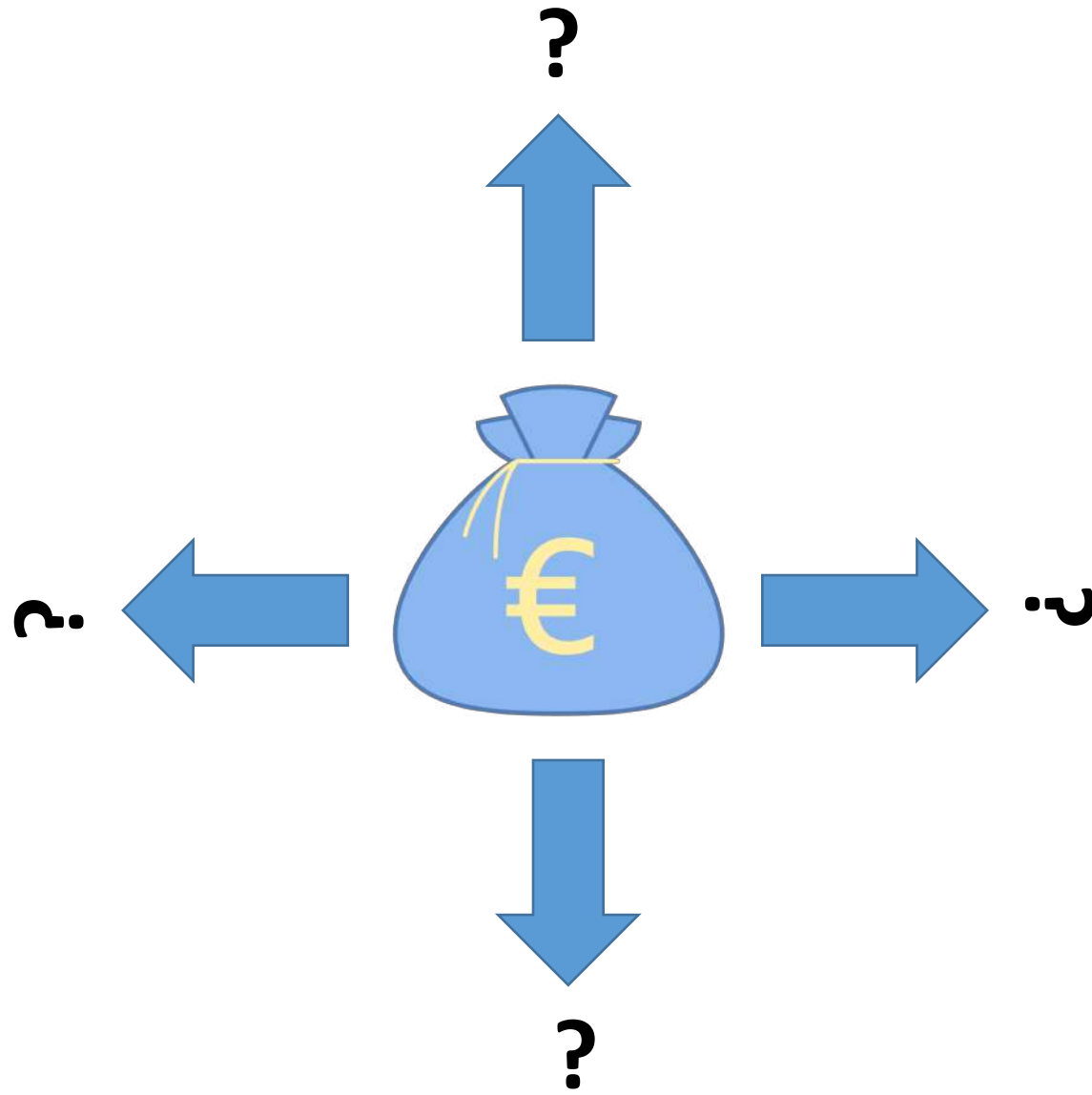
30 regional parks

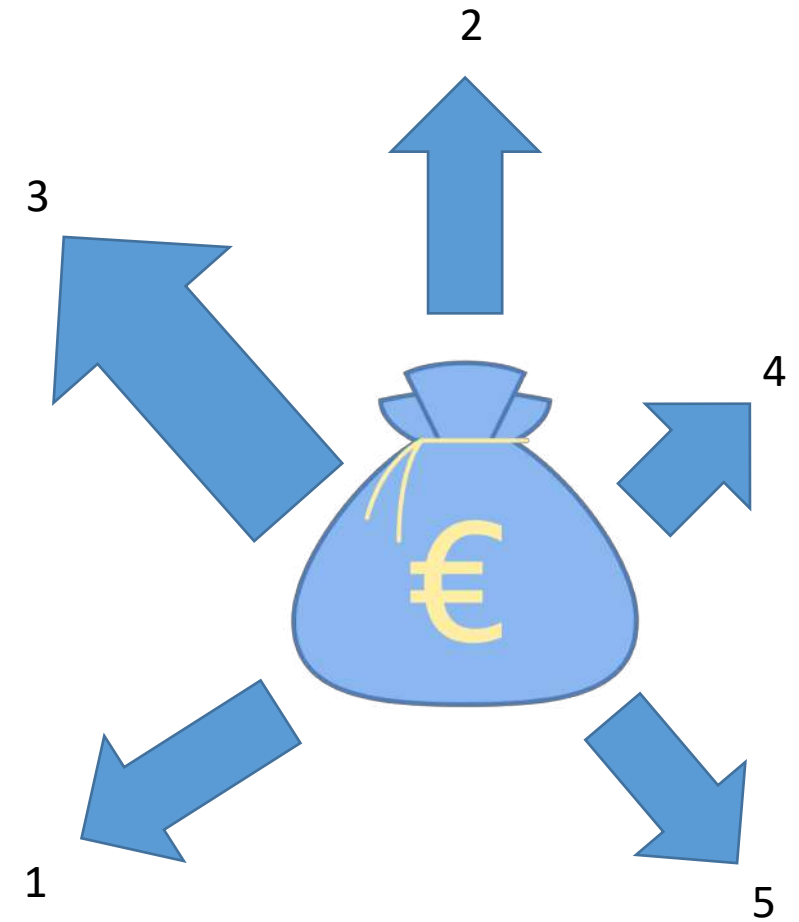


LIFE Viva Grass LIFE13 ENV/LT/000189

2019

www.vivagrass.eu

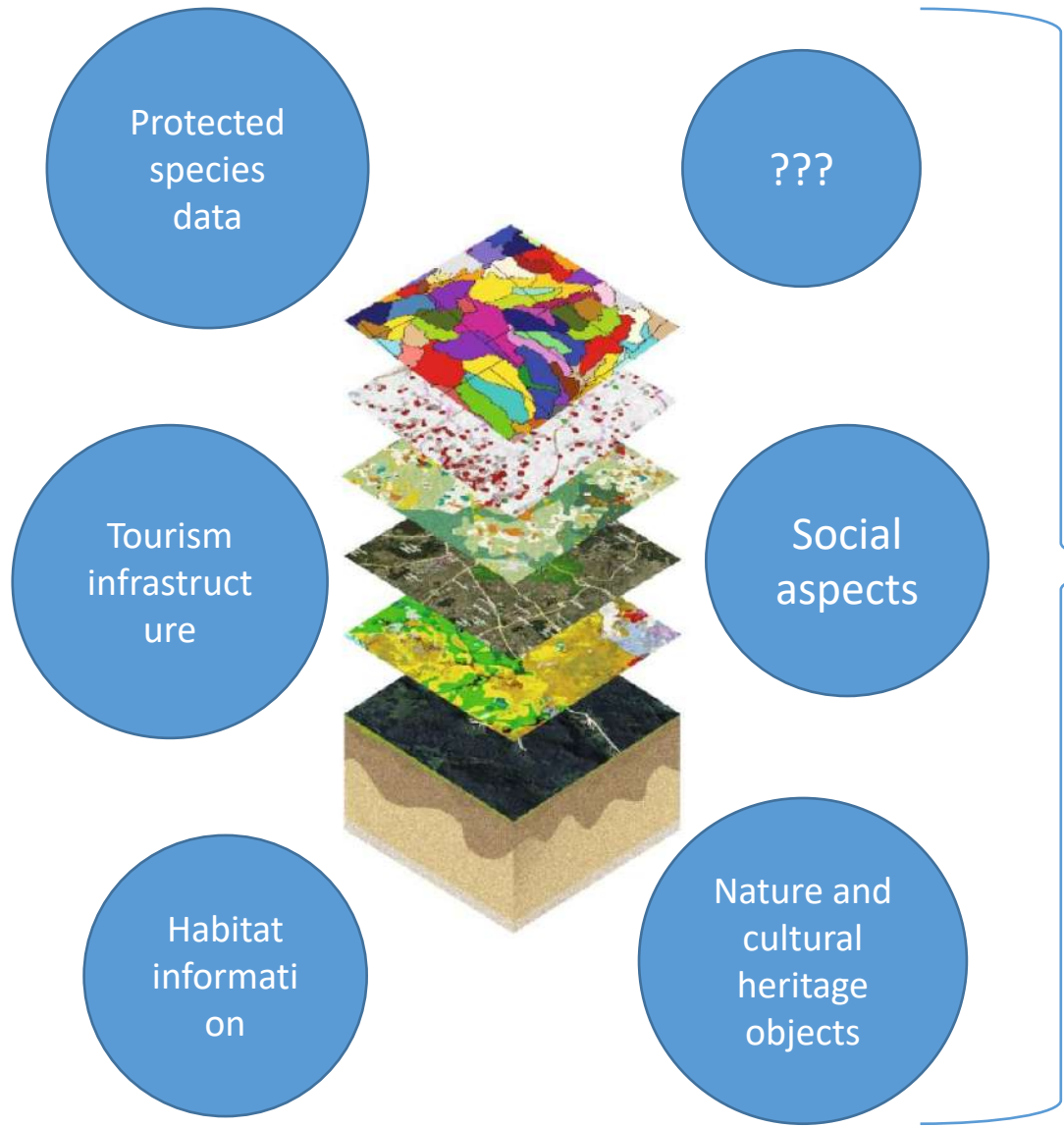




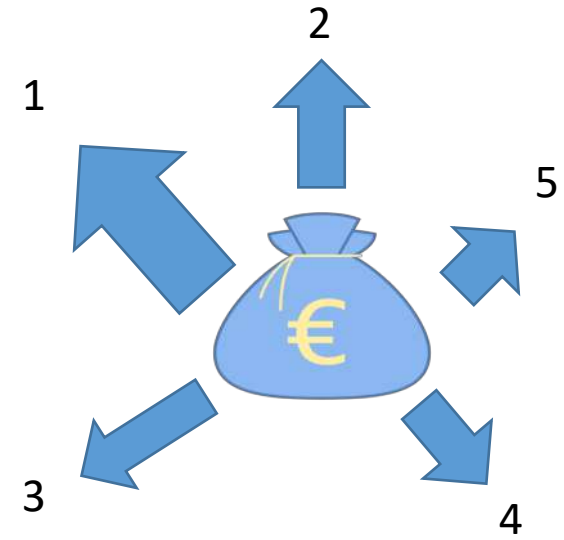
LIFE Viva Grass LIFE13 ENV/LT/000189

2019

www.vivagrass.eu



+



LIFE Viva Grass LIFE13 ENV/LT/000189

2019

www.vivagrass.eu

Prioritization attribute weight

66 features selected
 Define weight of selected fields

Habitat	35
ProtSpML	10
ProtSpFlora	30
ProtSpFauna	25

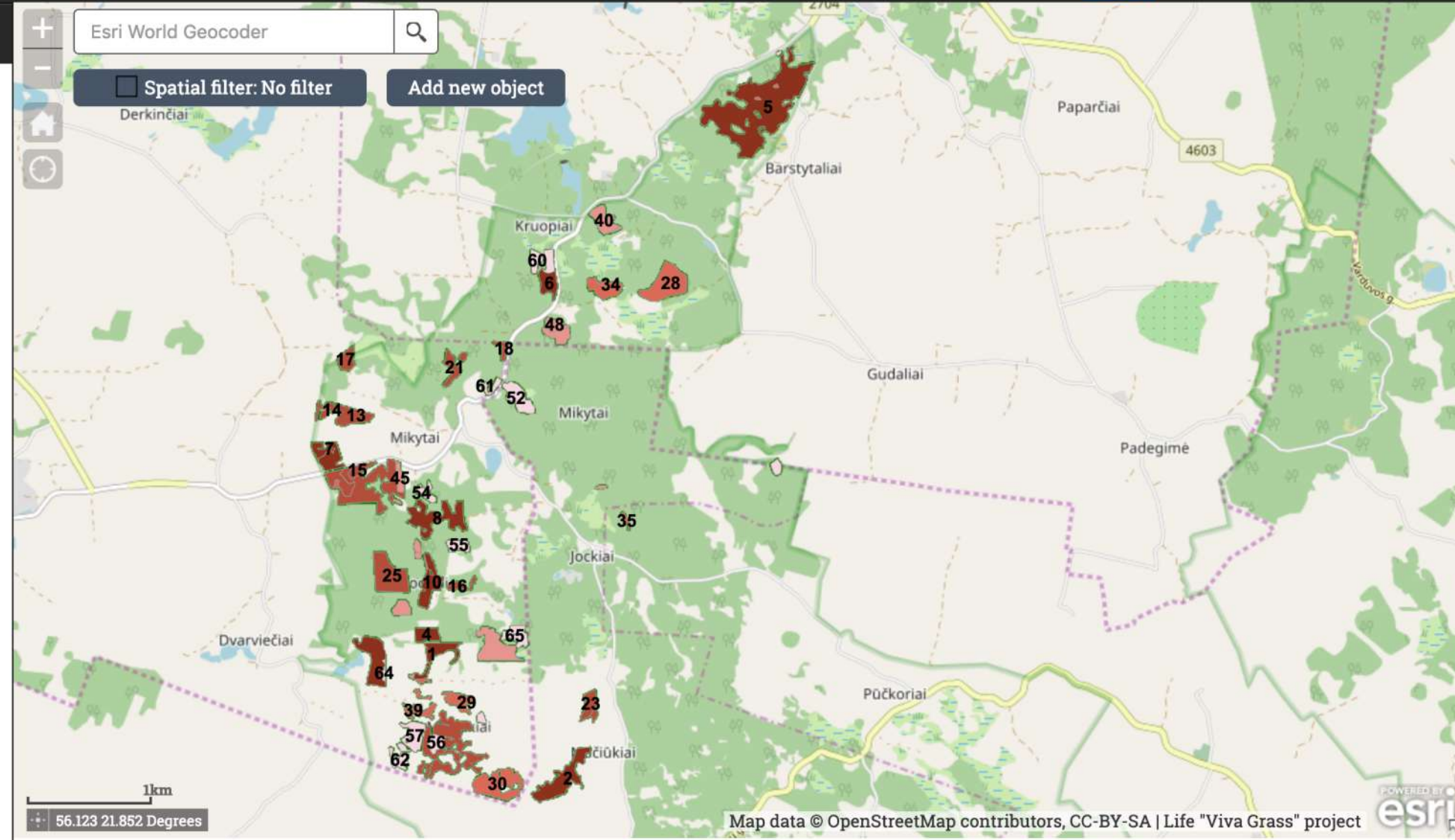
100%

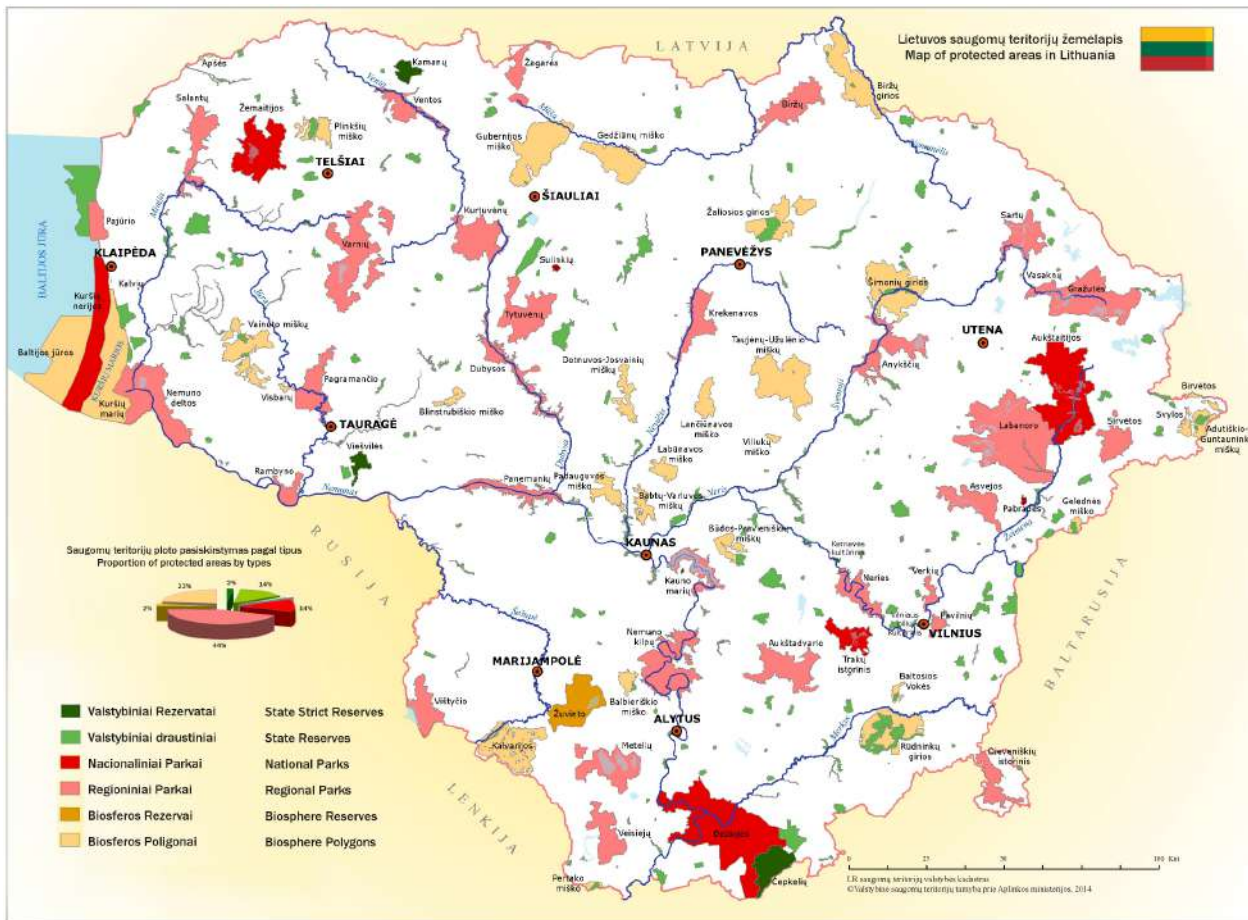
0.44 - 0.7	(10)
0.37 - 0.44	(15)
0.32 - 0.37	(14)
0.25 - 0.32	(12)
0.01 - 0.25	(15)

Show rank labels **Apply grouping...**

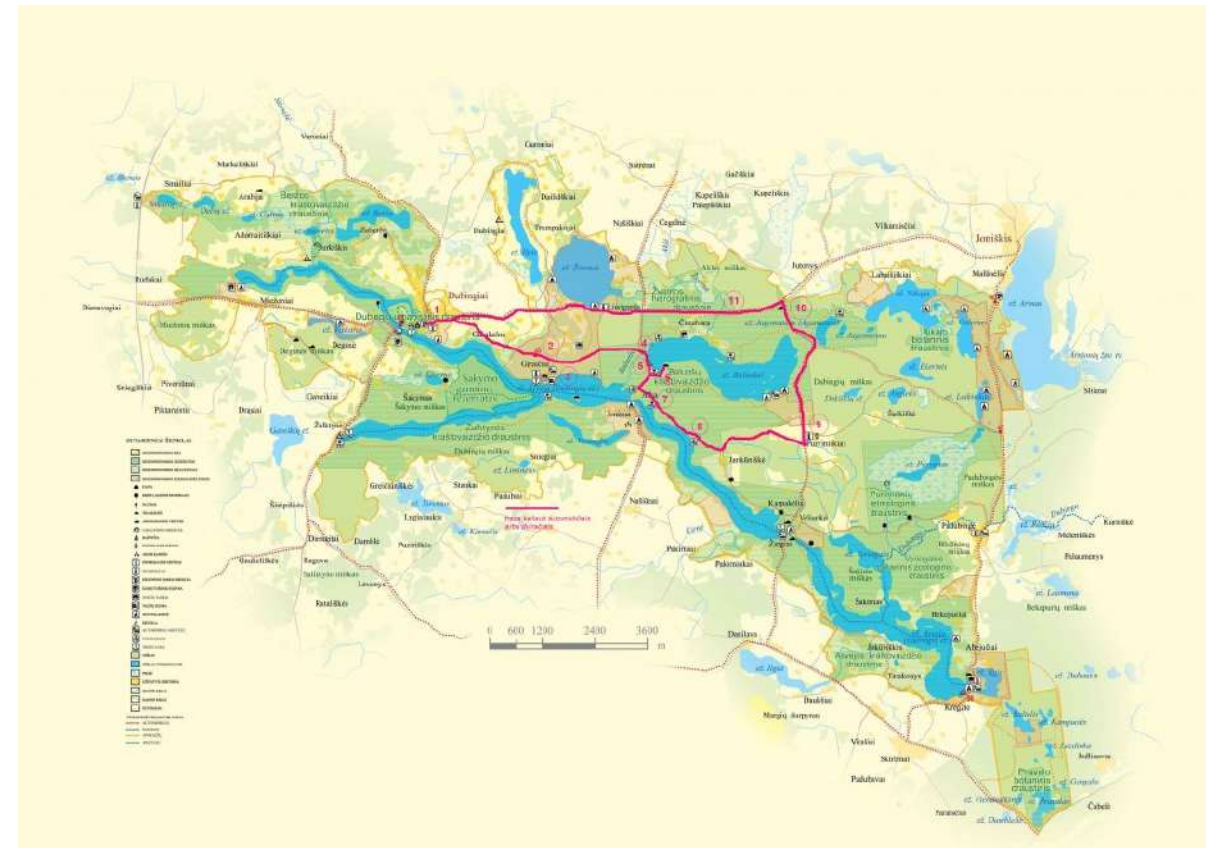
Edit attribute list

Save prioritization rule





Single protected area scale



Whole protected area system (national) scale



LIFE Viva Grass LIFE13 ENV/LT/000189

2019

www.vivagrass.eu

www.vivagrass.eu



GRASSLANDS

We aim to support maintenance of biodiversity and ecosystem services provided by grasslands, through encouraging ecosystem based planning and economically viable grassland management.

[READ MORE](#)



LIFE Viva Grass LIFE13 ENV/LT/000189

2019

www.vivagrass.eu