

Stakeholder involvement in the project activities

Kristina Veidemane, Laura Remmelgas, Dace Strigune, Merle Kuris, Rita Griniene, Justas Gulbinas

Vilnius, 28 February 2019

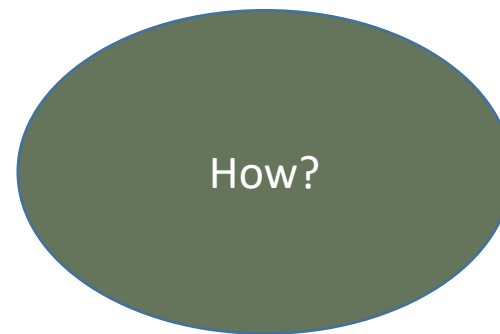
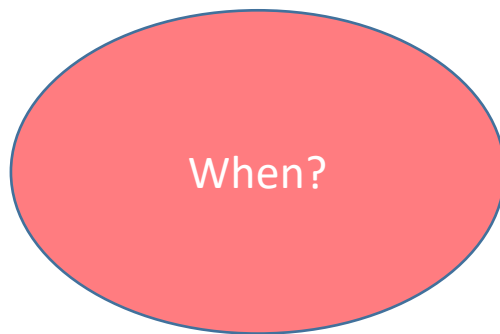
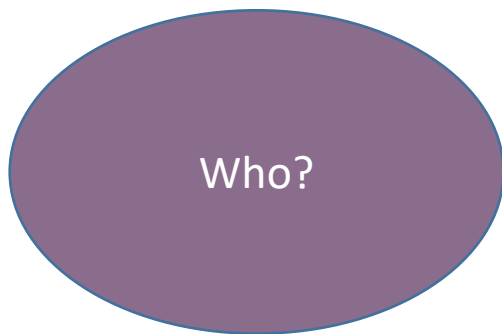


LIFE Viva Grass LIFE13 ENV/LT/000189

www.vivagrass.eu

Stakeholder involvement strategy

- ✓ To define the responsibilities of the different stakeholder groups
- ✓ To clarify their role in semi-natural grassland management
- ✓ To analyse the stakeholder interactions with the LIFE Viva Grass project activities:
 - › To communicate on expectations and needs
 - › To identify involvement methods and obstacles



Initial stakeholder mapping

**Stakeholders
INFLUENCING** planning
and management
policies

- State authorities
 - Environmental, agricultural, regional development
- Regional and local authorities
- Planning consultants
- Protected area administrations
- Scientists/researchers
- NGOs and lobby organisations

**Stakeholders are or could
be AFFECTED** by planning
and management
policies

- Farmers and land owners
- Tourism operators
- Non-food and food product producers
- Local inhabitants



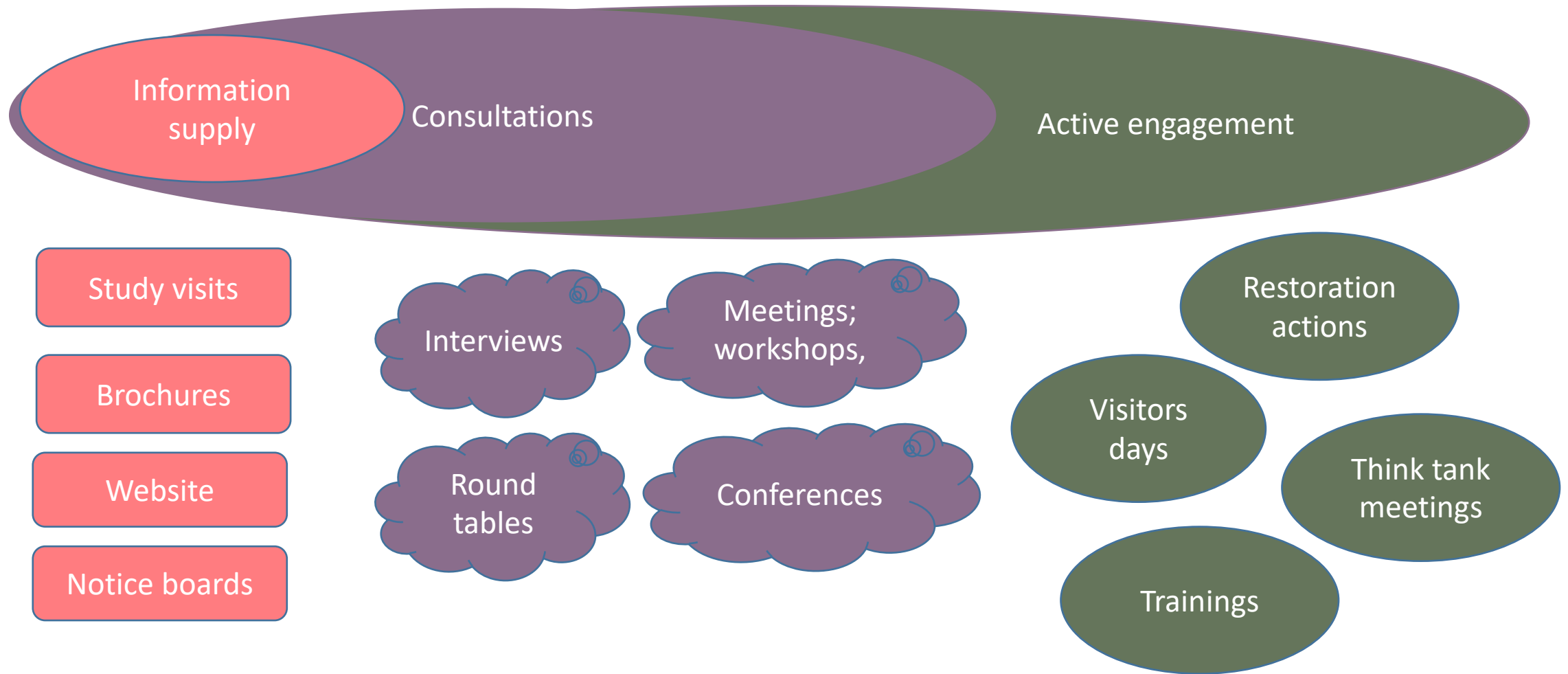
Initial stakeholder mapping

WHO	A1	A2	A3	A4	B1	B2	B3	B4	B5	B6	C1	C2	D1	D2	D3	D4	E4
COUNTY PLANNERS	x	x	x	x	x	x	x	x	x	x			x	x	x	x	
MUNICIPAL PLANNERS	x	x	x	x	x	x	x	x	x	x			x	x	x	x	
PROTECTED AREA PLANNERS	x	x	x	x	x	x	x	x	x	x			x	x	x	x	
FARMERS		x	x	x	x	x	x	x		x			x	x	x	x	
RURAL DEVELOPMENT ADMINISTRATORS	x	x	x	x	x	x	x	x	x	x			x	x	x	x	
ENVIRONMENTAL AUTHORITIES	x	x	x	x	x	x	x	x	x	x	x		x	x	x	x	
POLICY MAKERS	x		x		x					x			x	x		x	
ECONOMIC ACTORS (e.g. , Tourism, food production)			x		x	x	x	x	x				x	x		x	
NGOs	x	x	x		x					x			x	x		x	
LOCAL INHABITANTS			x									x	x	x		x	
SCIENTISTS/RESEARCHERS	x	x	x	x		x	x	x	x	x	x	x	x	x	x	x	
INTERNATIONAL GRASSLAND COMMUNITY	x	x									x	x	x			x	x

- Degree of involvement
- Information supply
- Consultation on drafts
- Active involvement in tasks

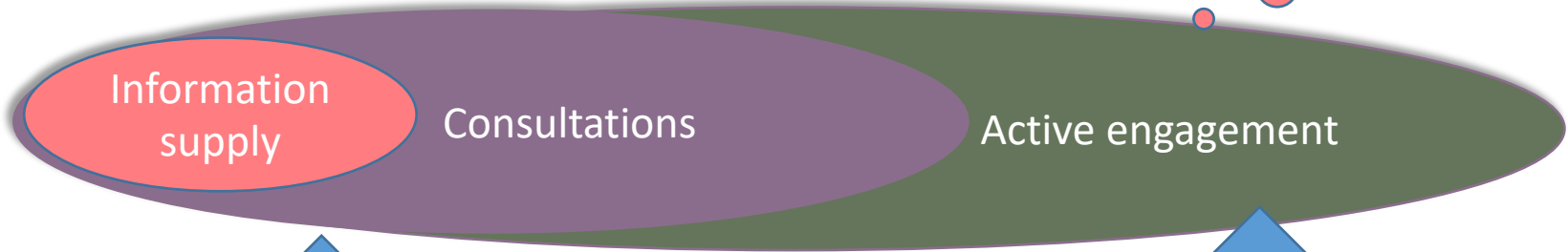


Methodology on public involvement





Visitors days in demo areas (3 years) ~ 1000 persons



AWARENESS RAISING

CAPACITY BUILDING



AWARENESS RAISING



Scientists

Project experts

What do you expect?

What are needs for planning and management?

What is so special about semi-natural grasslands?

What are ecosystem services?

Farmers

Municipalities (planners)

Ministries (MoA, MoE)

How can we apply ecosystem service concept in different planning contexts?



Prioritization of areas for landscape maintenance and management in Cēsis municipality



Mapping of ES values

Setting priorities by weighting exercise

Priority areas based on landscape values

Recreational value

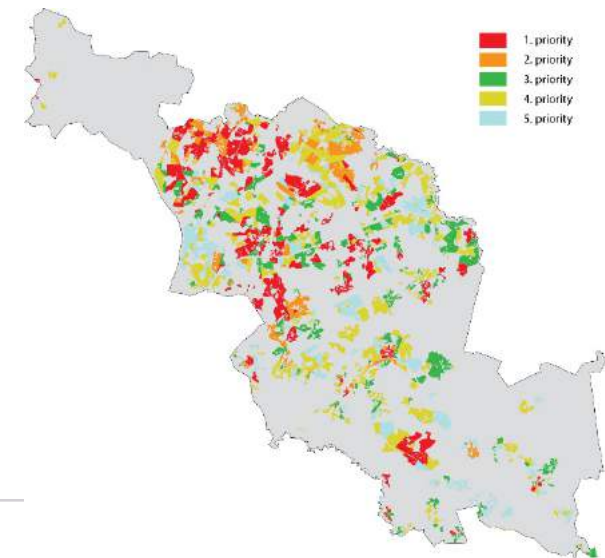
Aesthetic value

Cultural heritage value

Ecological potential

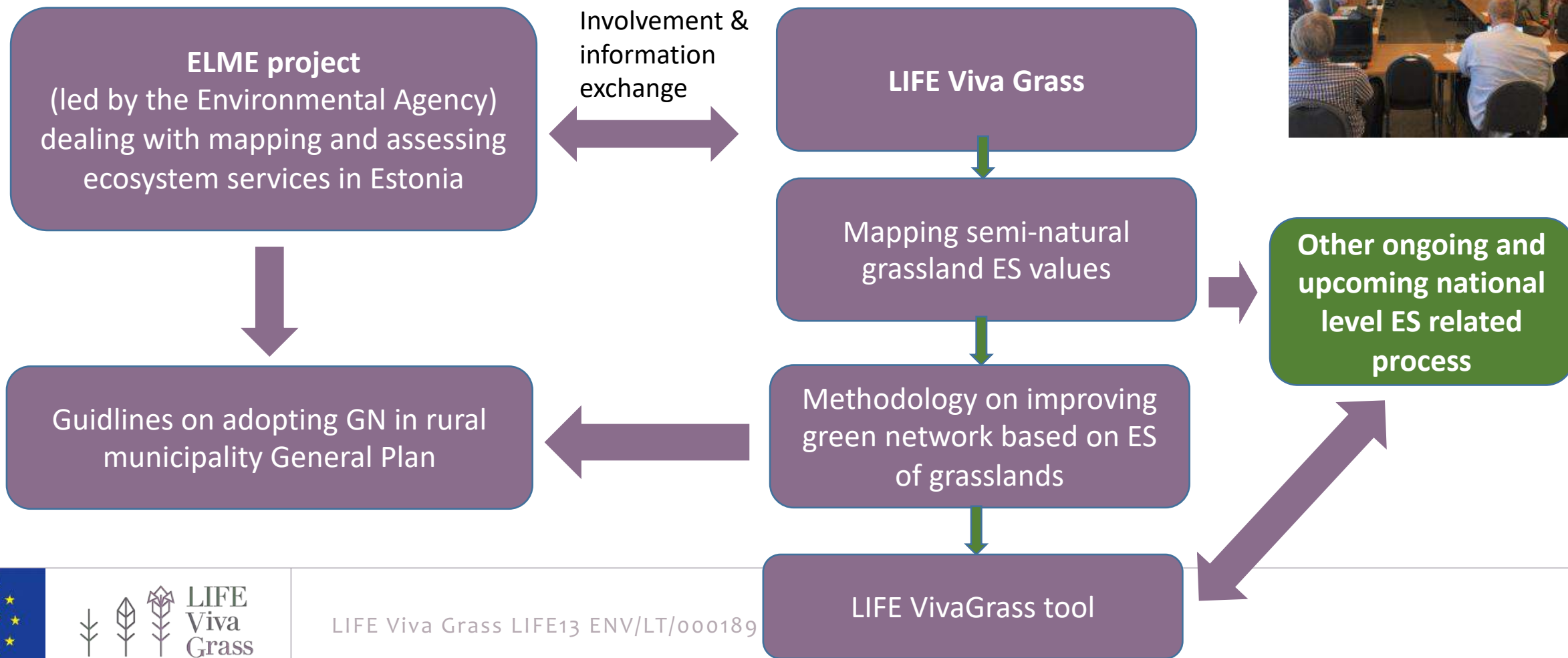
Well-being dimensions

- amenity;
- employment possibilities;
- health;
- security
- access to culture
- access to education
- development infrastructure
- social security and care



National level involvement in Estonia

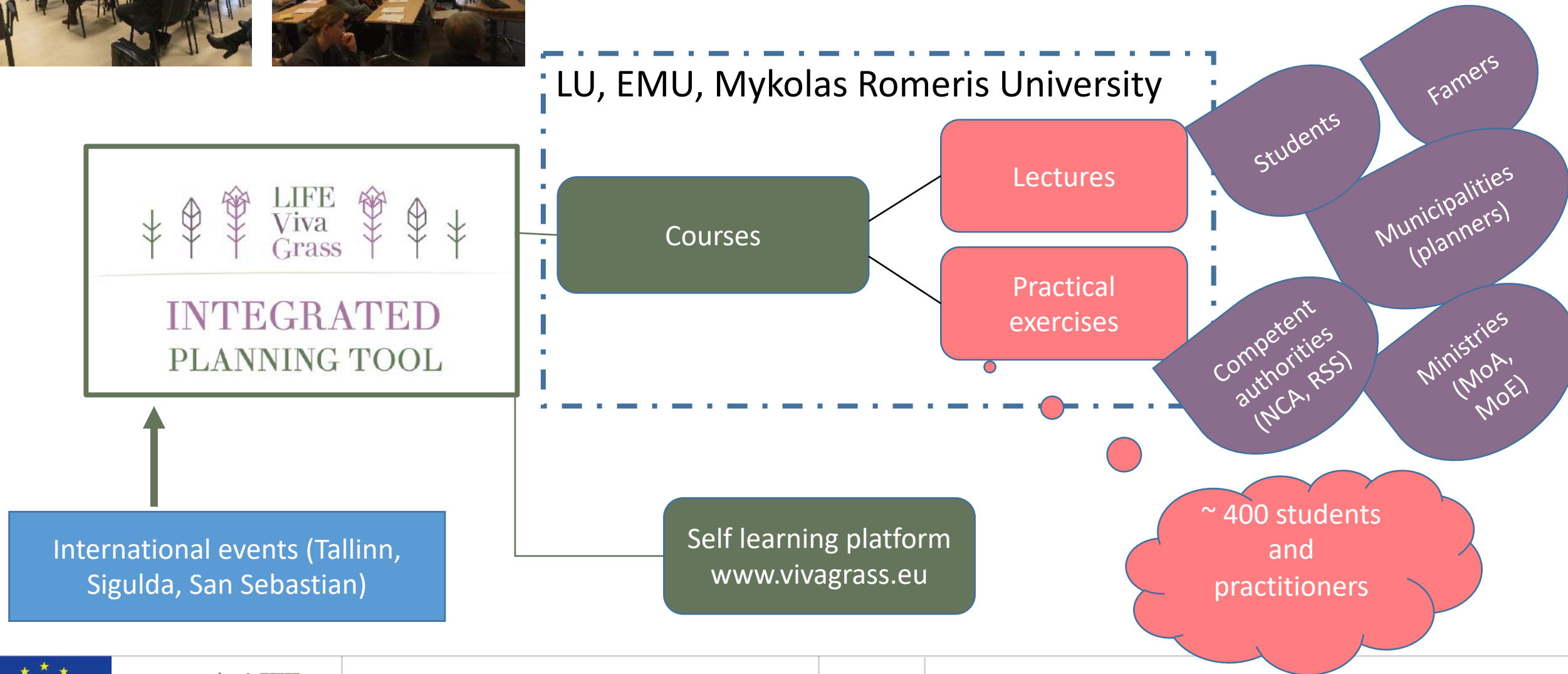
Incorporating ES into environmental management and spatial planning



LIFE Viva Grass LIFE13 ENV/LT/000189



CAPACITY BUILDING



LIFE Viva Grass LIFE13 ENV/LT/000189

www.vivagrass.eu



THANK YOU!!!



LIFE Viva Grass LIFE13 ENV/LT/000189

www.vivagrass.eu