

LIFE Viva Grass project: Prioritization of areas for landscape maintenance and management in Cēsis municipality case study area

Anda Ruskule, BEF-LV & Ivo Vinogradovs, LU

16 May 2018, Sigulda, Latvia



LIFE Viva Grass LIFE13 ENV/LT/000189

www.vivagrass.eu

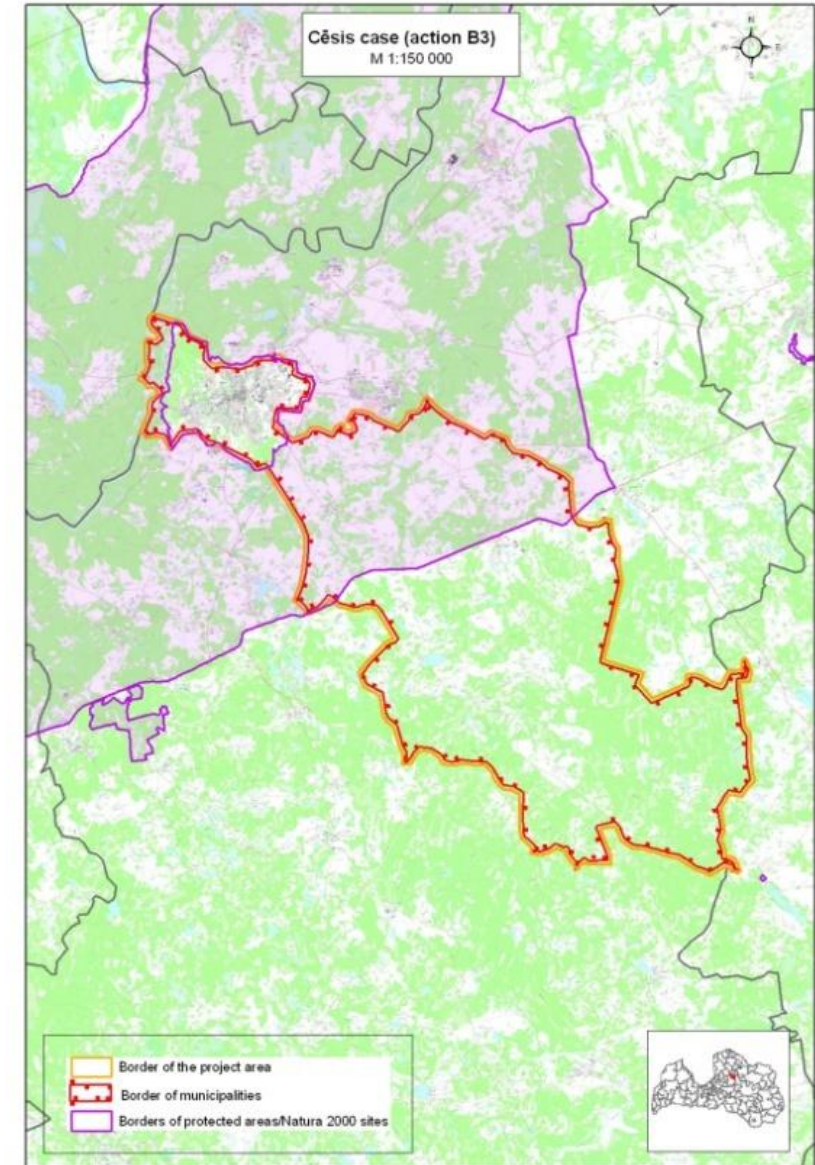
Cēsis municipality case study

✓ Facts about the case study area:

- › Area of municipality: 172 km²
- › Number of inhabitants: 18 440 (Cēsis 17 170)
- › Vaive parish:
 - › Share of agriculture land: 35%
 - › Share of forests: 56%

✓ Objective of the case study:

- › to identify **priority areas for landscape maintenance** and development and suitable management solutions



Map on landscape values and risks of Cēsis municipality

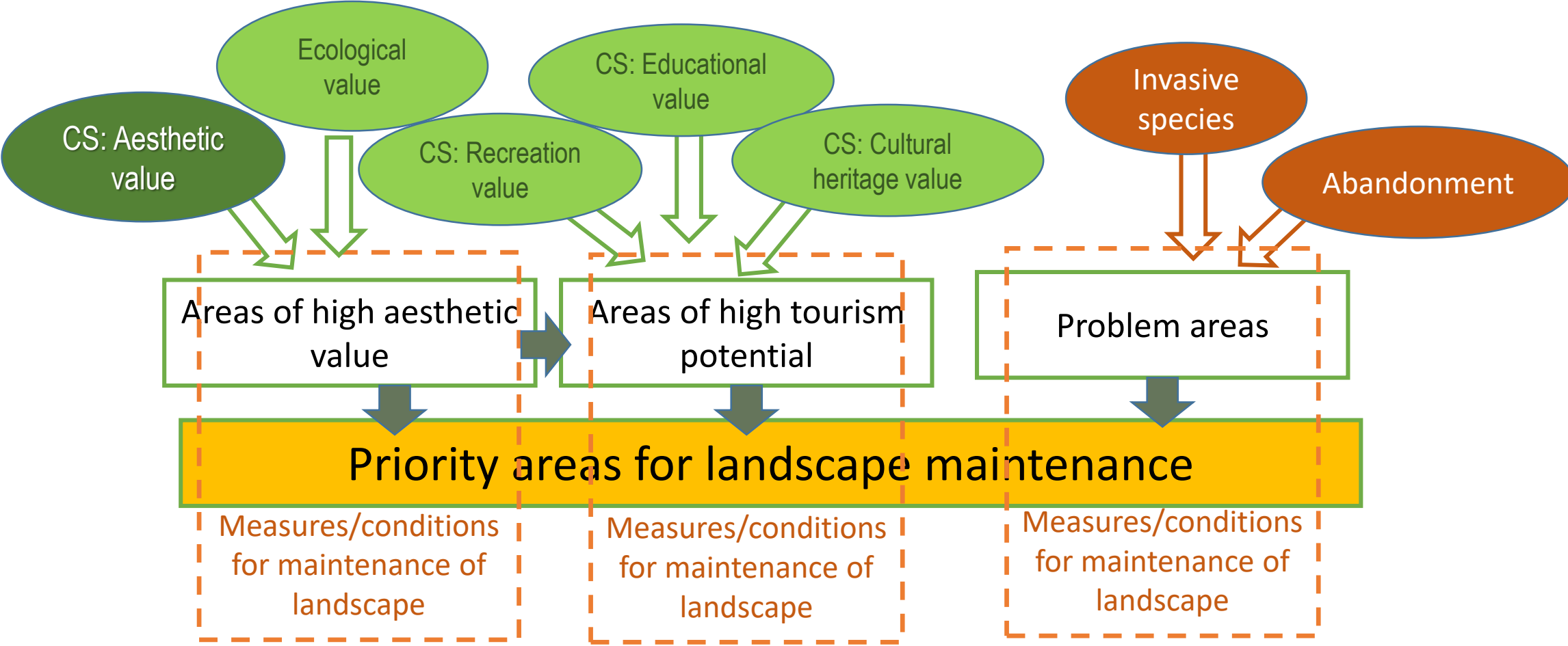
Areas defined:

- › Landscape aesthetic value:
- › Landscape cultural heritage value:
- › Landscapes of ecological importance
- › Areas of landscape risks:
 - › Abandoned agriculture land
 - › Areas and road sides invaded by hog-weed;
 - › Visually degraded landscapes, objects

The map included in the “Cēsis municipality spatial plan for 2016-2026”



Conceptual model of prioritization



VIVAGRASS PLANNER: Prioritization modele

VivaGrass Prioritization

The project integrated planning tool to ensure viability of grasslands (LIFE Viva Grass)
 No LIFE13 ENV/LT/000189 is co-financed by the EU LIFE+ Programme,
 Ministry of Environment of the Republic of Lithuania, Latvian Environmental Protection...

Tester 1 org_test
Testing Organizati...

Layers

Valuable objects

Dangerous objects

Grassland blocks

Grassland Block

- Cultivated grassland
- Permanent grassland
- Semi-natural grassland
- Arable land
- Abandoned land
- Other (undefined)

Background map:

Spatial filter: No filter
Add new object

Esri, HERE, Garmin, USGS, NGA | Life "Viva Grass" project

Grassland Block: 1. Cultivated grassland on plain relief, low soil fertility

BLOCK ID

Grassland category: 1. Cultivated grassland on plain relief, low soil fertility

Slope category: Plain

Soil category: Low

Land category: Cultivated grassland

Land use

Reared animals and their outputs ESS: 3

Fodder ESS: 3

Edit

Grasslands	Prioritization	Context data:	User data	Import shp							
BLOCK ID	GRASSLAND CATEGORY	REARED ANIMALS AND	FODDER ESS	BIOMASS-BASED ENERGY	HERBS FOR MEDICINE	CONTROL OF (WATER)	MAINTAINING HABITATS	WEATHERING PROCESSES/SOI	CHEMICAL CONDITION OF	GLOBAL CLIMATE	CULT CROP
697	15. Permanent grassland on gentle ...	3	2	2	2		3	3	3	4	
698	15. Permanent grassland on gentle ...	3	2	2	2		3	3	3	4	
46433	12. Permanent grassland on plain ...	3	2	2	2	0	3	3	4	3	0
46434	12. Permanent grassland on plain ...	3	2	2	2	0	3	3	4	3	0
46435	12. Permanent grassland on plain ...	3	2	2	2	0	3	3	4	3	0
46436	6. Cultivated grassland on gentle ...	4	3	3	1	2	2	3	3	2	0
46437	32. Arable land on plain relief, ...	0	4	4	1	0	1	2	2	1	3
46438	16. Permanent grassland on gentle ...	3	2	2	2	3	3	3	4	3	0
46440	11. Permanent grassland on plain ...	2	1	1	3	0	4	2	3	3	0
46441	15. Permanent grassland on gentle ...	2	1	1	2	4	4	2	2	2	0

All Rights Reserved

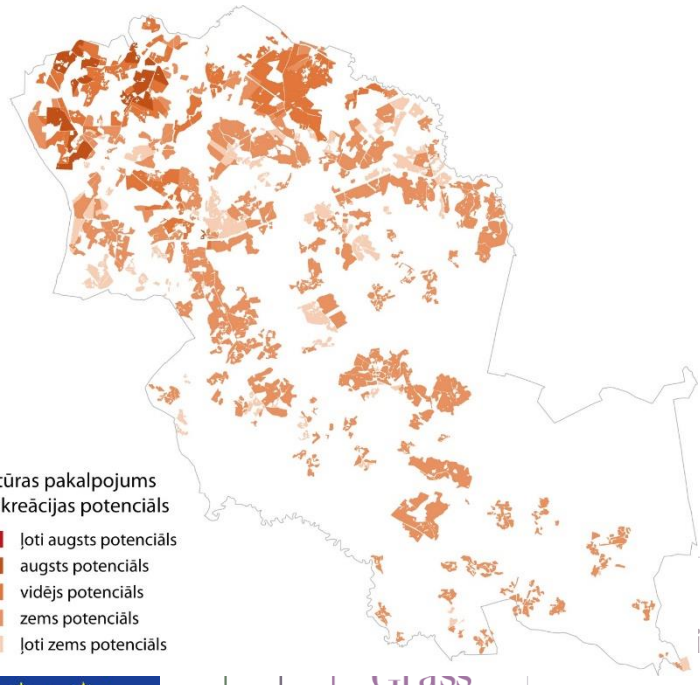


Values of cultural ecosystem services

Recreational value

Indicators:

- proximity of rural recreational enterprises
- proximity of watching towers
- presence of hunting ground
- social gathering places
- camping sites



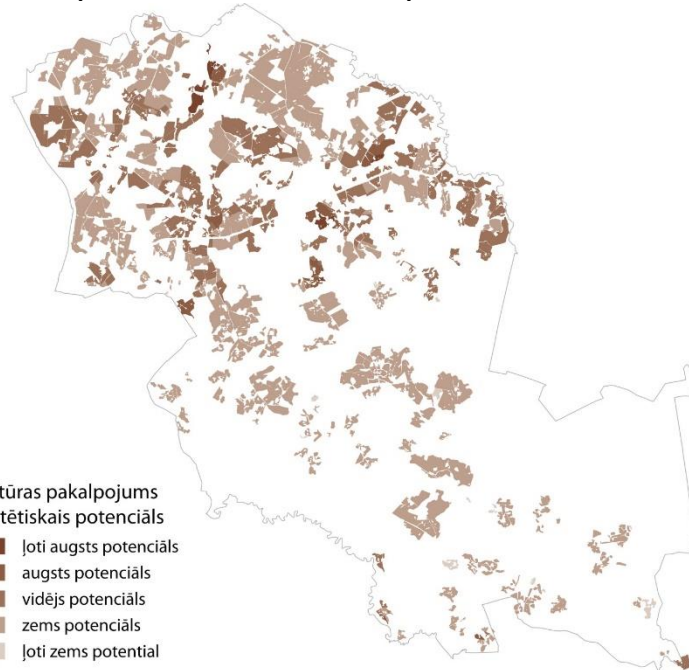
Kultūras pakalpojums
- rekreācijas potenciāls

- ļoti augsts potenciāls
- augsts potenciāls
- vidējs potenciāls
- zems potenciāls
- ļoti zems potenciāls

Aesthetic value

Indicators:

- vicinity of water bodies and streams,
- linear landscape elements (hedgerows, stonewalls),
- naturalness of surroundings
- naturalness of grassland itself,
- level of undulating of terrain,
- openness of landscape



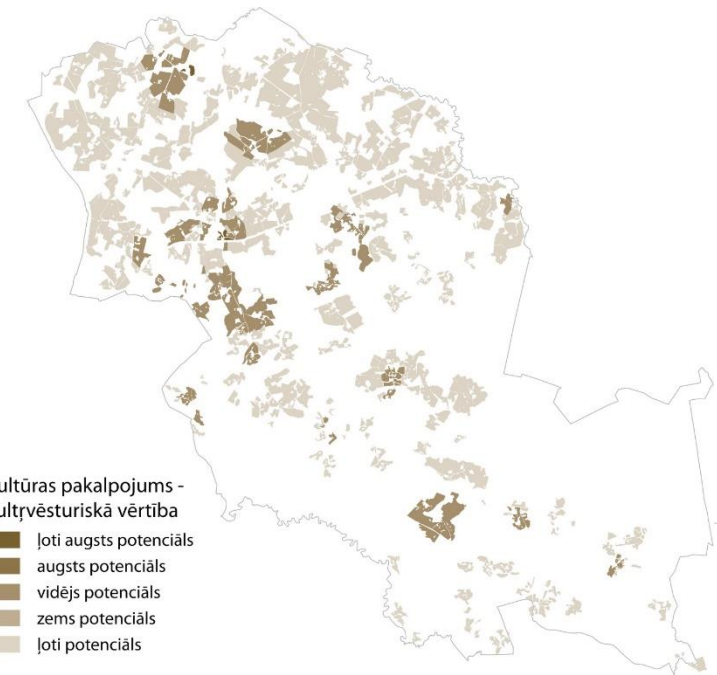
Kultūras pakalpojums
- estētiskais potenciāls

- ļoti augsts potenciāls
- augsts potenciāls
- vidējs potenciāls
- zems potenciāls
- ļoti zems potenciāls

Cultural heritage value

Indicators:

- vicinity of monuments,
- vicinity of farmsteads before 19th century
- vicinity of traditional land use



Kultūras pakalpojums -
kultūrvēsturiskā vērtība

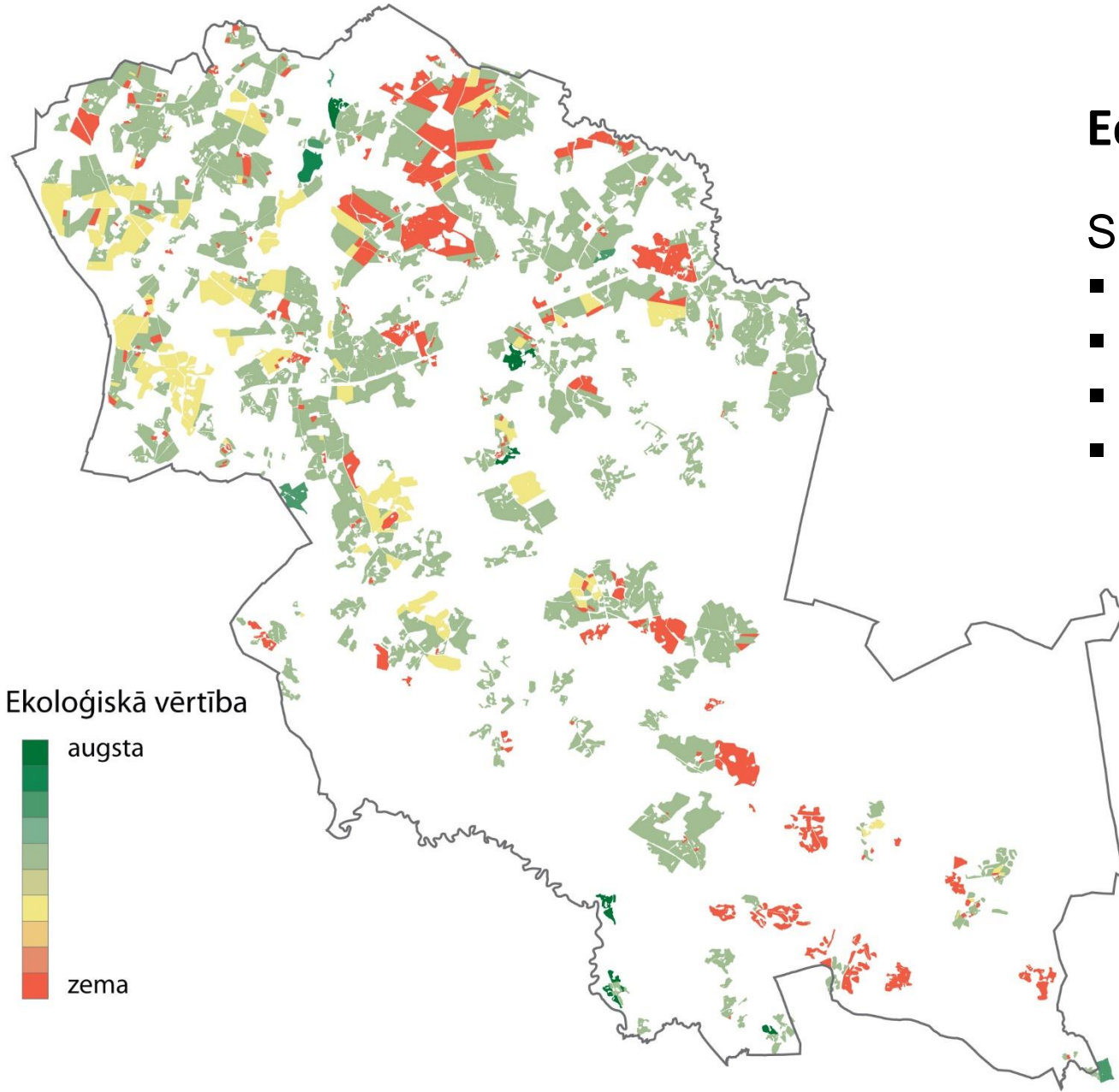
- ļoti augsts potenciāls
- augsts potenciāls
- vidējs potenciāls
- zems potenciāls
- ļoti potenciāls



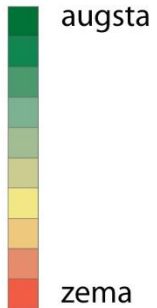
Grass

iva Gras

rw.vivag



Ekoloģiskā vērtība



Ecological potential

Sum of the following ecosystem services:

- herbs for medicine
- pollination
- Habitat maintenance
- Global climate regulation



LIFE Viva Grass LIFE13 ENV/LT/000189

www.vivagrass.eu

Weighting exercise of ES by local stakeholders

- ✓ Meeting with 18 Representatives of Municipality (spatial planners, tourism experts, farmers etc.):
 - › Introduction to landscape as resource for development;
 - › Linking ES values to well-being dimensions
 - › Prioritisation of ES values taking into account their contribution to well-being dimensions

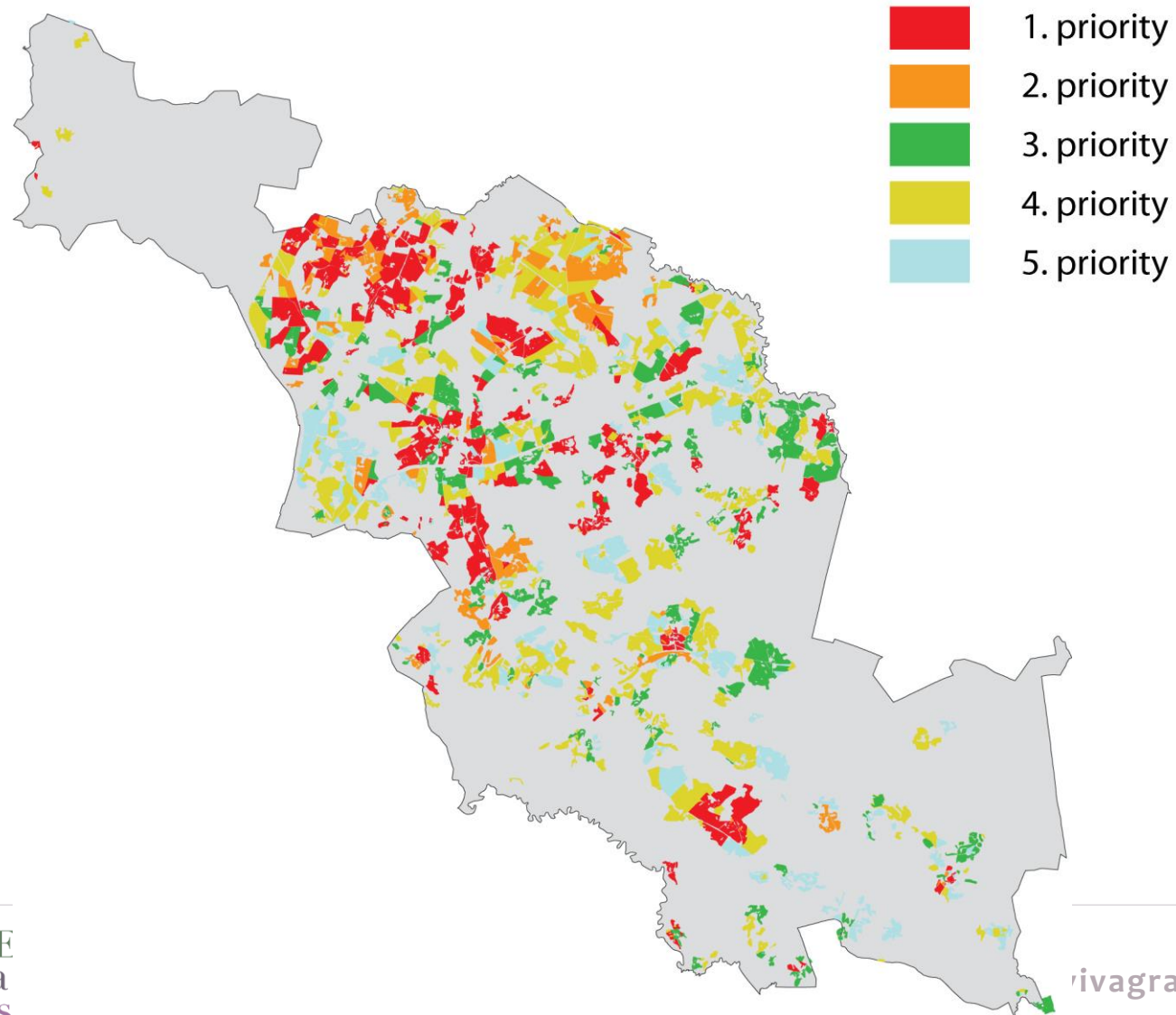
ES values	Average of priorities	Weight %
Aesthetic value	4	25 %
Recreational value	3	18 %
Educational value	2	12 %
Cultural heritage value	3	22%
Ecological value	4	23 %
		100%

Well-being dimensions *taken into account in prioritisation of ES values:*

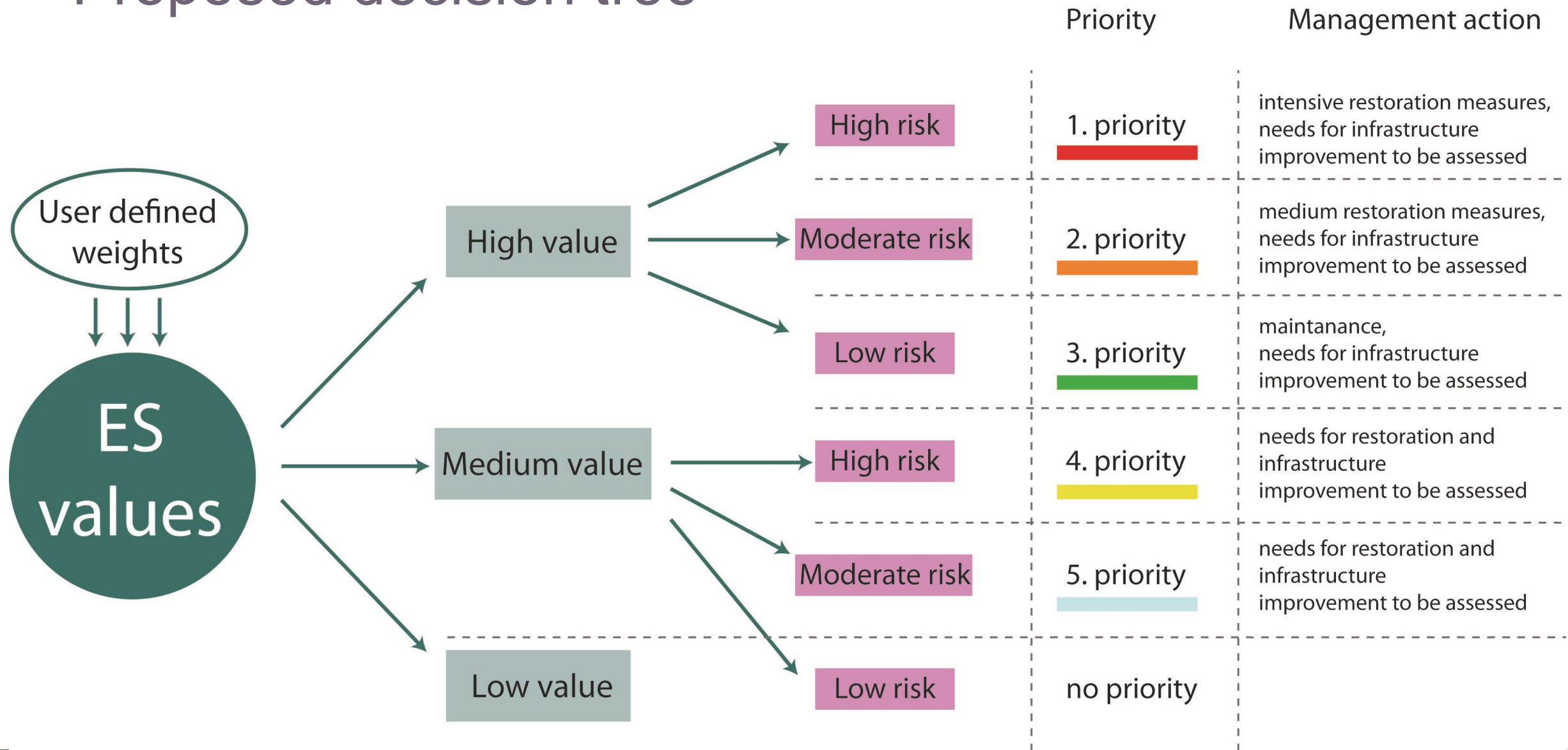
- amenity;
- employment possibilities;
- health;
- security
- access to culture
- access to education
- development infrastructure
- social security and care



Priority areas based on landscape values



Proposed decision tree



Next steps:

- Integration of the “decision tree” within the prioritization model of the Tool
- Next meeting with stakeholders – to discuss the prioritization results and develop place specific management proposals
- Develop recommendations on landscape governance to be integrated in Cēsis Municipality Development Programme, Action Plan



Thank you!



LIFE Viva Grass LIFE13 ENV/LT/000189

www.vivagrass.eu